



## MAX Pro Catalog

[jepesen.com/lightmarine](http://jepesen.com/lightmarine)

Jeppesen is a Boeing Company

 **JEPPESEN**  
MARINE

# Table of Contents

## WELCOME!

|                                     |   |
|-------------------------------------|---|
| Introduction and OEM Partners ..... | 3 |
|-------------------------------------|---|

## FEATURES

|  |   |
|--|---|
| 3D Virtual World .....                           | 4 |
| Satellite Imagery and Chart Presentation .....   | 5 |
| Photos & Diagrams and Fishing Contour Data ..... | 6 |
| Quick Sync Updating and Tides & Currents .....   | 7 |

## COVERAGE

|   |    |
|---|----|
| Alaska & Western Canada (MW) .....                | 8  |
| North America East & West Coasts (MW) .....       | 9  |
| Alaska & Western Canada (W) .....                 | 10 |
| Eastern Canada (W) .....                          | 11 |
| The Great Lakes (W) .....                         | 12 |
| North America East and Central Coasts (W) .....   | 13 |
| North America West Coasts & Hawaii (W) .....      | 14 |
| Central and South America (MW) .....              | 15 |
| Antarctic (MW) .....                              | 16 |
| Central and South America (W) .....               | 17 |
| Northern Europe (MW) .....                        | 18 |
| Western Europe (MW) .....                         | 19 |
| Baltic Sea, Gulf of Bothnia and Finland (W) ..... | 20 |
| Norwegian Coasts (W) .....                        | 21 |
| Benelux, Germany, Poland and Denmark (W) .....    | 22 |
| River Volga (W) .....                             | 23 |
| Western and Central Europe (W) .....              | 24 |
| Med & Red Sea, Caspian & Black Sea (MW, W) .....  | 25 |
| Med & Red Sea, Caspian & Black Sea (W) .....      | 26 |
| Africa and The Middle East (MW) .....             | 27 |
| Africa and The Middle East (W) .....              | 28 |
| Indian Ocean, Asia and Oceania (MW) .....         | 29 |
| Indian Ocean and Asia (W) .....                   | 30 |
| Oceania (W) .....                                 | 31 |
| Russian Federation (MW) .....                     | 32 |
| Russian Federation (W) .....                      | 33 |
| The World .....                                   | 34 |

NOTE: Coverage areas are approximate.

## MORE INFORMATION

|                         |    |
|-------------------------|----|
| Customer Policies ..... | 35 |
|-------------------------|----|

## About MAX Pro

The C-MAP by Jeppesen MAX Pro charting technology from Jeppesen Marine is an advanced electronic charting standard designed for high performance navigation systems. MAX Pro takes electronic charting to new dimensions, guaranteeing an exclusive navigation experience to the most demanding navigators.



MAX Pro is the premium chart technology for the light marine market. It is loaded with professional navigation features like 3D Virtual World Display, Satellite Imagery Overlay, Quick Sync Updating, Photos & Diagrams, Tides & Currents, Fishing Contour Data, and more.

MAX Pro is available in Wide and MegaWide titles. Each purchase or unlock of a MAX Pro title includes a complimentary, one-year subscription to Jeppesen Marine's Quick Sync Updating, offering unlimited updates on demand. Charts may also be rented for 4 months. You'll always sail with the most accurate charts and updated information.

### OEM Partners



**NOBELTEC**<sup>®</sup>

**NORTHSTAR**★

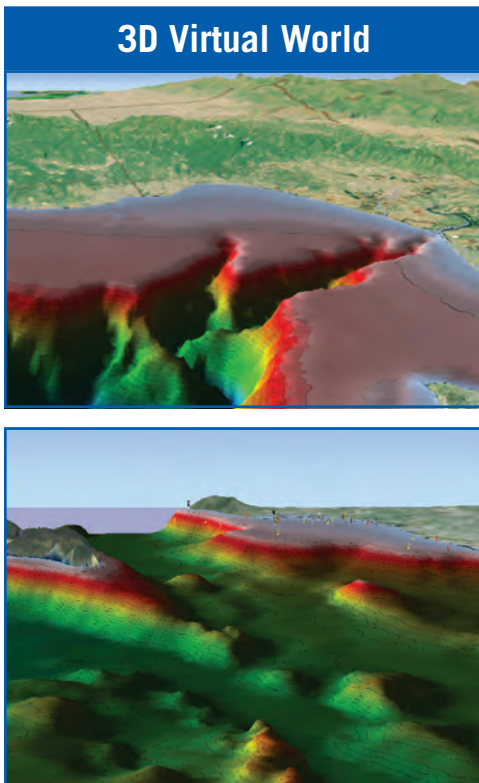
**SIMRAD**

- 3XEL
- Chartworx
- TMQ
- TSR Electronic

# MAX Pro Features

The latest evolution in C-MAP by Jeppesen charting technology from Jeppesen Marine is an advanced electronic charting standard, designed for high performance navigation systems. MAX Pro takes electronic charting to new dimensions, guaranteeing an exclusive navigation experience to the most demanding navigators.

MAX Pro is loaded with professional navigation features like: 3D Virtual World Display, Satellite Imagery Overlay, Quick Sync Updating, Photos & Diagrams, Tides & Currents, Fishing Contour Data and more.

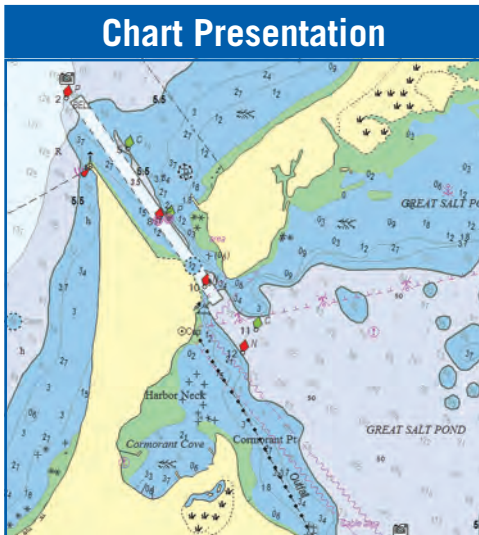


Provides a powerful and dynamic 3D visualization of the seabed. Extensive bathymetry, land elevation data and satellite/aerial imagery are carefully integrated to create a truly stunning “virtual world” display of the navigation scenario.

# MAX Pro Features




**Official Data Source - Satellite Overlay:** Superb presentation of satellite/aerial imagery is displayed directly on the electronic chart.




Looks and feels like a paper chart, but with the power of a vector chart!  
MAX Pro is the premium chart technology for the light marine market.

# MAX Pro Features


## Photos & Diagrams

 Includes...

- Bridge Diagrams
- Lighthouses
- Reef Diagrams
- Approaches to Inlets
- Birds Eye Views




Approaches to Inlets



Lighthouses




Bridge Diagrams



Elbow Reef  
Marine Protection Area

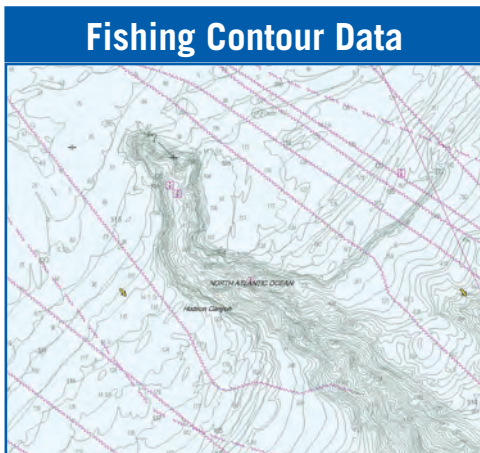
City of Wilmington  
Wreck

Reef Diagrams



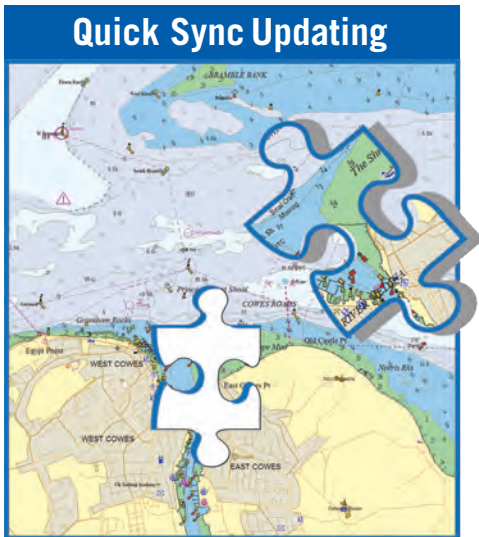
"Bird's Eye" Views

MAX Pro incorporates a wealth of value-added data, including C-MAP by Jeppesen renowned C-Marina port database (with high-resolution photos of ports and marinas), a global tidal database, land elevations, satellite and aerial photos.

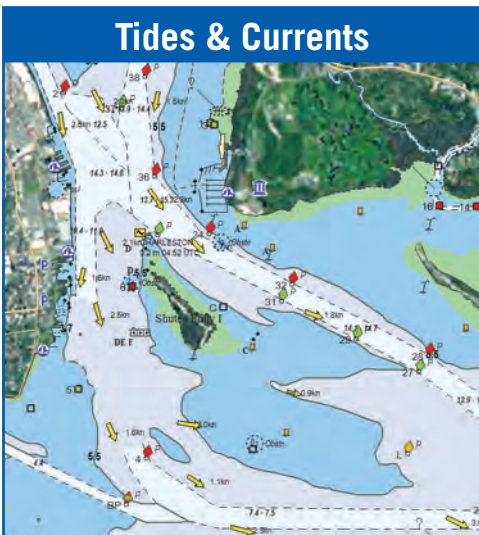


Bathymetric contour data comes alive with MAX Pro. Fishermen have the ability to turn on/off contour charts displaying the highest available detail of offshore bottom structure including canyons, seamounts, ridges and other seabed features.

# MAX Pro Features

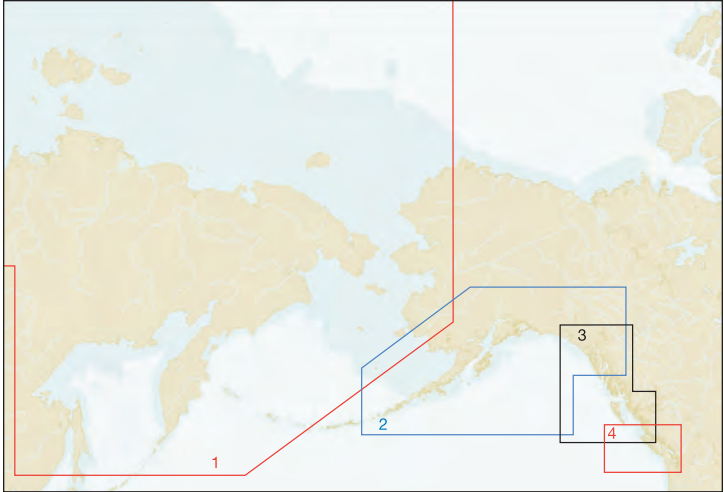


Navigators can download official updates, including data and NTMs (Notices To Mariners) at any time. Updates are quickly downloaded and automatically applied via the Internet or e-mail.



Tidal Heights and Current Flow Database: Tidal prediction graphs as well as current direction, speed and strength are depicted on the chart.

# Alaska and Western Canada



## **MEGAWIDES - \$499 USD (each)**

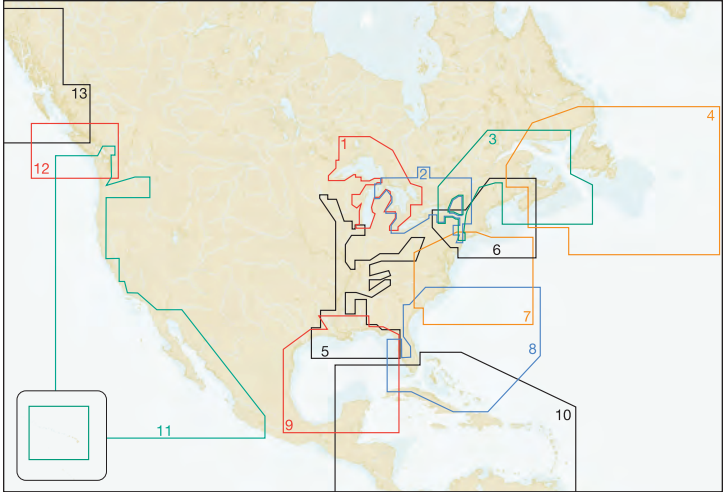
- 1 RS-P002 RUSSIAN FEDERATION NORTH EAST
- 2 NA-P015 FREDERICK SOUND TO BRISTOL BAY
- 3 NA-P014 QUEEN CHARLOTTE STR. TO YAKUTAT BAY
- 4 NA-P013 PUGET SOUND AND VANCOUVER ISLAND

**MEGAWIDES** (pp. 8 & 9)

**RENTAL - \$150 USD**

**RENEWAL - \$150 USD**

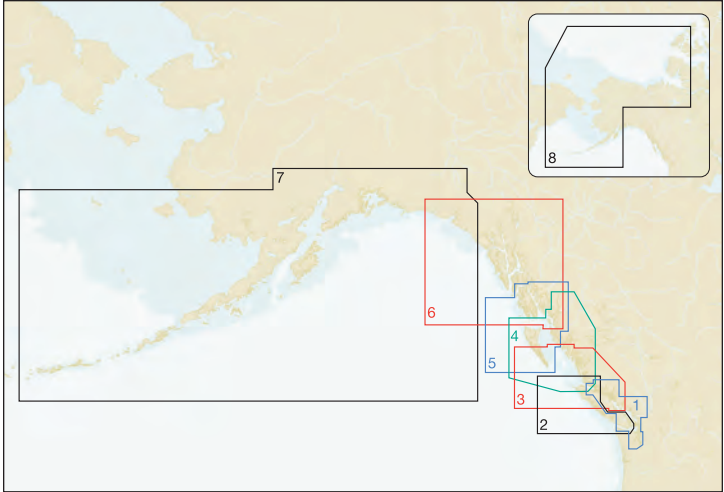
# North America East and West Coasts



## MEGAWIDES - \$499 USD (each)

- |    |         |  |
|----|---------|--|
| 1  | NA-P001 | GREAT LAKES: HURON, MICHIGAN, SUPERIOR |
| 2  | NA-P002 | GREAT LAKES: HURON, ERIE, ONTARIO      |
| 3  | NA-P003 | SAINT LAWRENCE TO NOVA SCOTIA          |
| 4  | NA-P004 | GULF OF ST LAWRENCE AND NEWFOUNDLAND   |
| 5  | NA-P005 | US INLAND RIVERS AND WATERWAYS         |
| 6  | NA-P006 | BAY OF FUNDY TO BARNEGAT BAY           |
| 7  | NA-P007 | BLOCK ISLAND TO WINYAH BAY             |
| 8  | NA-P008 | HATTERAS TO TAMPA INCL. BAHAMAS        |
| 9  | NA-P009 | TAMPA TO BROWNSVILLE TO CANCUN         |
| 10 | NA-P011 | CARIBBEAN SEA AND VICINITY             |
| 11 | NA-P012 | MANZANILLO, MX TO HAWAII TO VANCOUVER  |
| 12 | NA-P013 | PUGET SOUND AND VANCOUVER ISLAND       |
| 13 | NA-P014 | QUEEN CHARLOTTE STR. TO YAKUTAT BAY    |

# Alaska and Western Canada



## **WIDES - \$339 USD (each)**

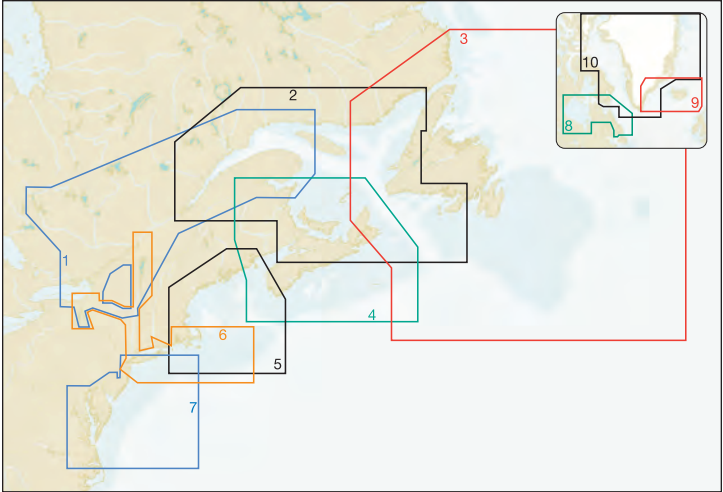
- 1 NA-P701 OLYMPIA, WA TO PORT MCNEILL, BC
- 2 NA-P702 NANOOSE TO VICTORIA TO CAPE SCOTT
- 3 NA-P704 TEXADA ISLAND TO CAAMANO SOUND
- 4 NA-P703 CAPE CAUTION TO PORTLAND CANAL
- 5 NA-P705 BANK ISLAND, BC TO SUMNER STRAIT, AK
- 6 NA-P801 DIXON ENTRANCE TO ICY BAY
- 7 NA-P802 GULF OF ALASKA
- 8 NA-P804 NORTHERN ALASKA

**WIDES** (pp. 10 & 11)

**RENTAL - \$105 USD**

**RENEWAL - \$105 USD**

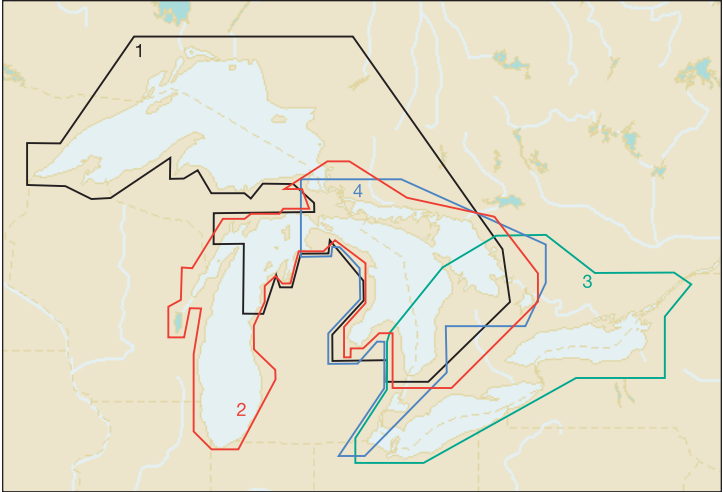
# Eastern Canada



**WIDES - \$339 USD (each)**

- |    |         |  |
|----|---------|--|
| 1  | NA-P202 | ST LAWRENCE, RIDEAU CANAL & CHAMPLAIN  |
| 2  | NA-P230 | GULF OF SAINT LAWRENCE                 |
| 3  | NA-P204 | NEWFOUNDLAND AND THE GRAND BANKS       |
| 4  | NA-P205 | FUNDY, NOVA SCOTIA, PEI & CAPE BRETON  |
| 5  | NA-P301 | PASSAMAQUODDY BAY TO NARRAGANSETT BAY  |
| 6  | NA-P302 | CAPE COD, LONG ISLAND AND HUDSON RIVER |
| 7  | NA-P303 | SHINNECOCK BAY TO ALBEMARLE SOUND      |
| 8  | NA-P203 | HUDSON BAY TO LABRADOR                 |
| 9  | EN-P402 | ICELAND AND FAEROE ISLANDS             |
| 10 | EN-P154 | GREENLAND COASTS                       |

# The Great Lakes



**WIDES - \$339 USD** (each)

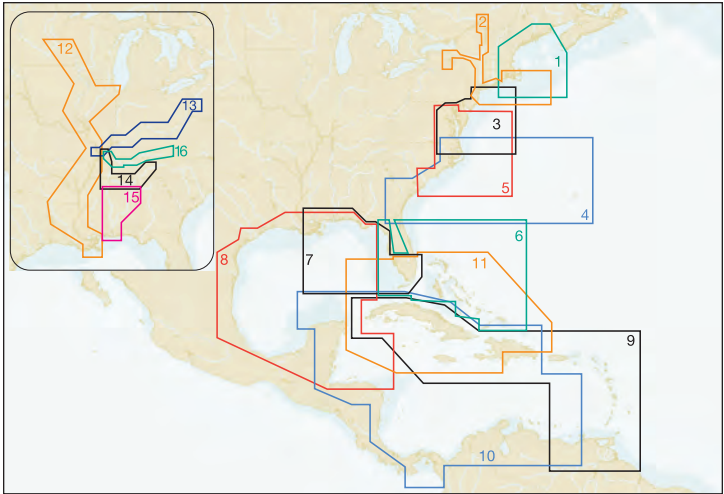
- 1 NA-P101 SUPERIOR, HURON, NO. CHANN. & GRGN BAY
- 2 NA-P102 MICHIGAN, HURON, NO. CHANN. & GRGN BAY
- 3 NA-P103 ERIE, ONTARIO AND THE TRENT-SEVERN
- 4 NA-P104 LAKE HURON, GEORGIAN BAY, N. CHANNEL

**WIDES** (pp. 12 & 13)

**RENTAL - \$105 USD**

**RENEWAL - \$105 USD**

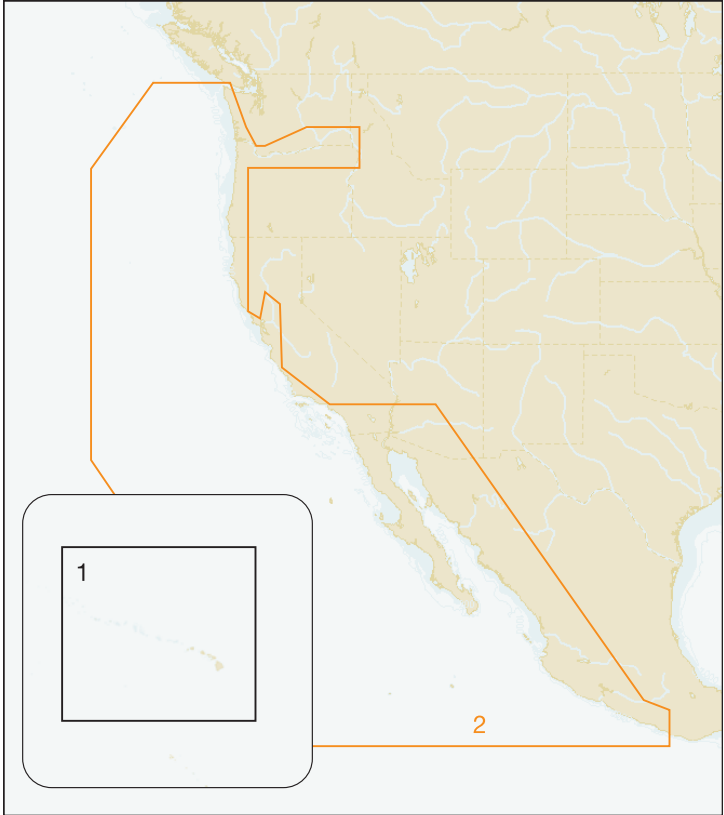
# North America East and Central Coasts



## WIDES - \$339 USD (each)

- |    |         |   |
|----|---------|---|
| 1  | NA-P301 | PASSAMAQUODDY BAY TO NARRAGANSETT BAY   |
| 2  | NA-P302 | CAPE COD, LONG ISLAND AND HUDSON RIVER  |
| 3  | NA-P303 | SHINNECOCK BAY TO ALBEMARLE SOUND       |
| 4  | NA-P304 | NORFOLK TO BERMUDA TO JACKSONVILLE      |
| 5  | NA-P310 | CAPE MAY TO WINYAH BAY                  |
| 6  | NA-P305 | FLORIDA AND THE BAHAMAS                 |
| 7  | NA-P401 | ST. LUCIE INLET TO LAKE PONTCHARTRAIN   |
| 8  | NA-P402 | PENSACOLA BAY TO GULF OF HONDURAS       |
| 9  | NA-P501 | CUBA TO TRINIDAD AND TOBAGO             |
| 10 | NA-P502 | WESTERN CARIBBEAN SEA                   |
| 11 | NA-P503 | FLORIDA: SOUTH, CUBA AND THE BAHAMAS    |
| 12 | NA-P040 | MISSISSIPPI AND ILLINOIS RIVERS         |
| 13 | NA-P039 | OHIO RIVER: CAIRO TO PITTSBURGH         |
| 14 | NA-P041 | TN RIVER: PADUCAH TO KNOXVILLE          |
| 15 | NA-P045 | BLACK WARRIOR AND LOWER TOMBIGBEE RIVER |
| 16 | NA-P046 | CUMBERLAND RIVER                        |

# North America West Coasts and Hawaii



**WIDES - \$339 USD** (each)

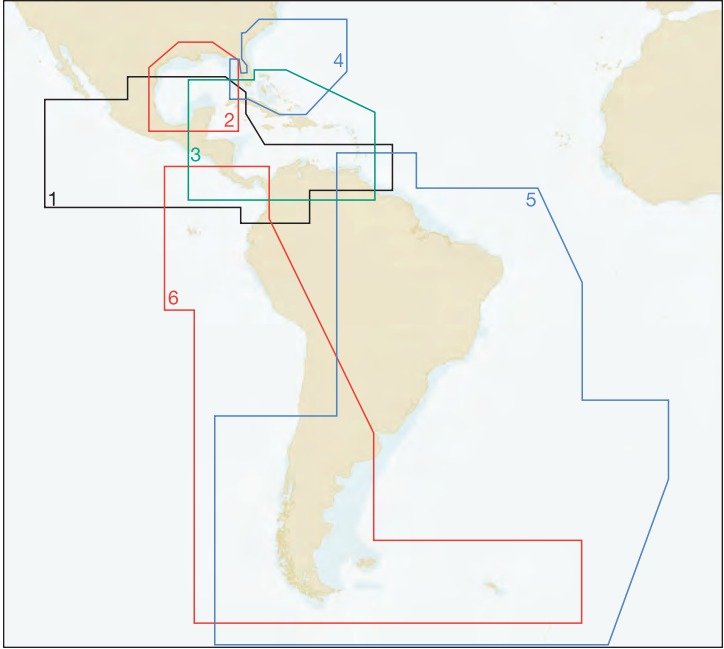
1 NA-P603 HAWAIIAN ISLANDS

2 NA-P601 ACAPULCO, MX TO CAPE FLATTERY, WA

**RENTAL - \$105 USD**

**RENEWAL - \$105 USD**

# Central and South America



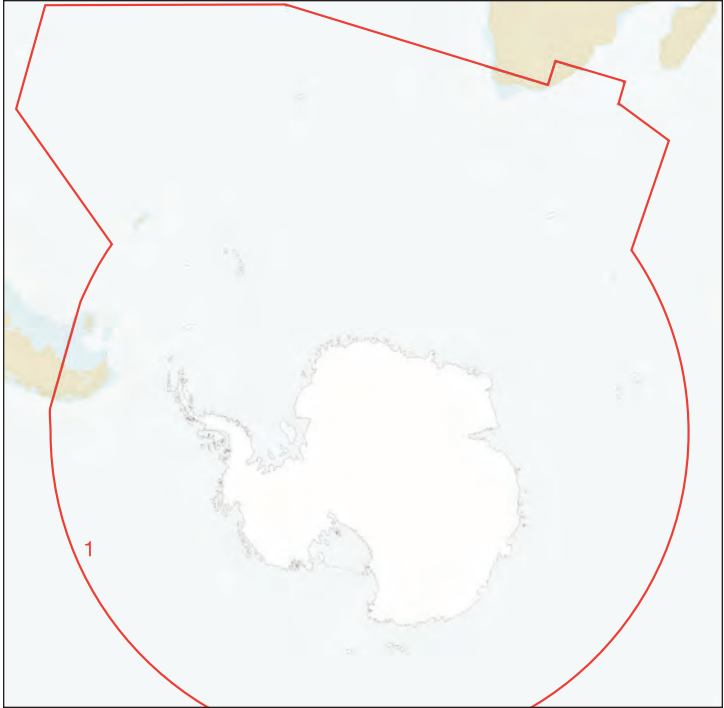
**MEGAWIDES - \$499 USD (each)**

- 1 NA-P010 CENTRAL AMERICA AND VENEZUELA
- 2 NA-P009 TAMPA TO BROWNSVILLE TO CANCUN
- 3 NA-P011 CARIBBEAN SEA AND VICINITY
- 4 NA-P008 HATTERAS TO TAMPA INCL. BAHAMAS
- 5 SA-P501 GULF OF PARIA TO CAPE HORN
- 6 SA-P500 COSTA RICA TO CHILE TO FALKLANDS

**RENTAL - \$150 USD**

**RENEWAL - \$150 USD**

# Antarctic



**MEGAWIDE - \$679 USD**

1 AF-P003 ANTARCTICA

**MEGAWIDES** (above)

**RENTAL - \$205 USD**

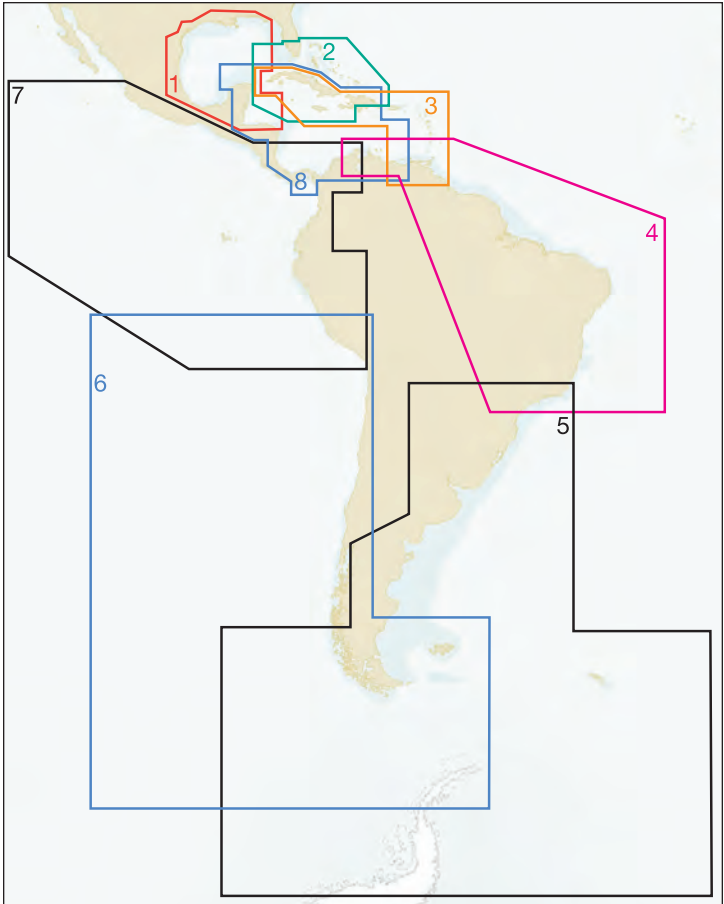
**RENEWAL - \$205 USD**

**WIDES** (page 17)

**RENTAL - \$130 USD**

**RENEWAL - \$130 USD**

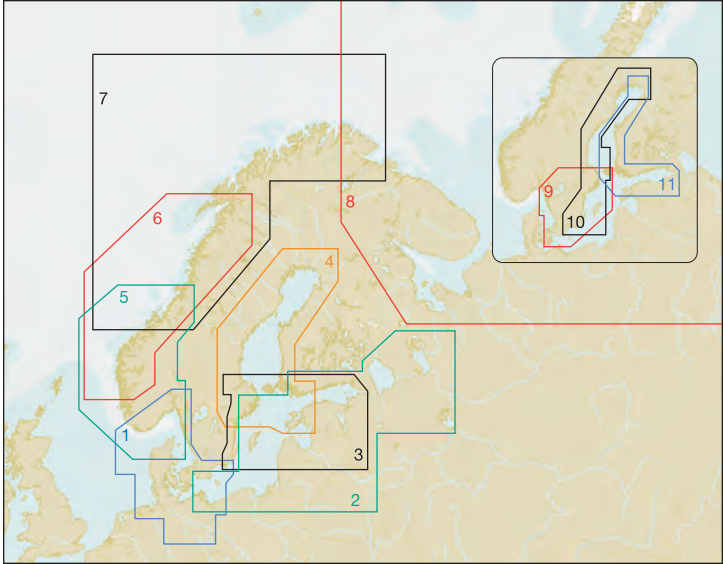
## Central & South America



**WIDES - \$339 USD (each)**

- 1 NA-P402 PENSACOLA BY TO GULF OF HONDURAS
- 2 NA-P503 FLORIDA: SOUTH, CUBA AND THE BAHAMAS
- 3 NA-P501 CUBA TO TRINIDAD AND TOBAGO
- 4 SA-P004 PUERTO BOLIVAR TO RIO DE JANEIRO
- 5 SA-P003 RIO DE JANEIRO TO CAPE HORN
- 6 SA-P002 CHILE
- 7 SA-P001 PERU TO PTO VALLARTA TO PTO BOLIVAR
- 8 NA-P502 WESTERN CARIBBEAN SEA

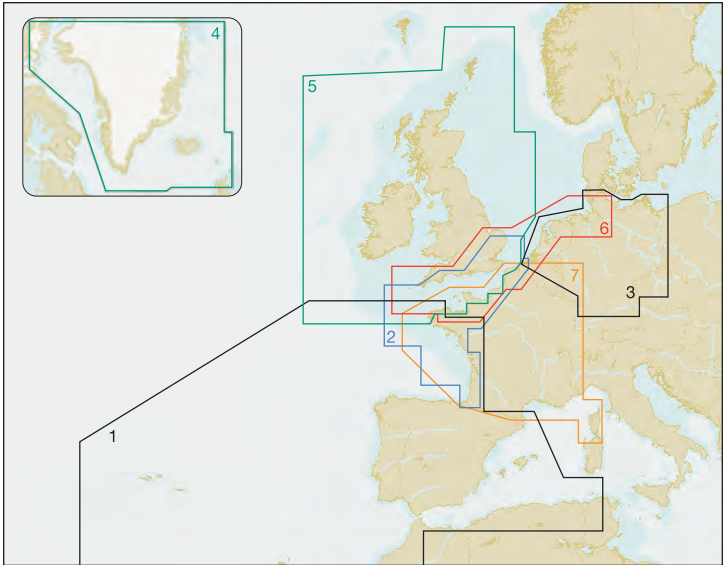
# Northern Europe



## MEGAWIDES - \$679 USD (each)

- |    |         |  |
|----|---------|--|
| 1  | EN-P004 | GERMANY, DENMARK AND SKAGERRAK           |
| 2  | EN-P006 | GULF OF FINLAND RUSSIAN LAKES AND BALTIC |
| 3  | EN-P010 | GOTHLAND TO ST. PETERSBURG               |
| 4  | EN-P012 | GULF OF BOTHNIA                          |
| 5  | EN-P002 | SKAGERRAK TO NAMSOS                      |
| 6  | EN-P003 | BERGEN TO LOFOTEN ISLANDS                |
| 7  | EN-P001 | TRONDHEIM TO KIRKENES                    |
| 8  | RS-P001 | RUSSIAN FEDERATION NORTH WEST            |
| 9  | EN-P005 | SOUTH SWEDEN INCL. INLAND WATERWAYS      |
| 10 | EN-P008 | EAST SWEDEN                              |
| 11 | EN-P007 | FINLAND                                  |

# Western Europe



**MEGAWIDES - \$679** (each)

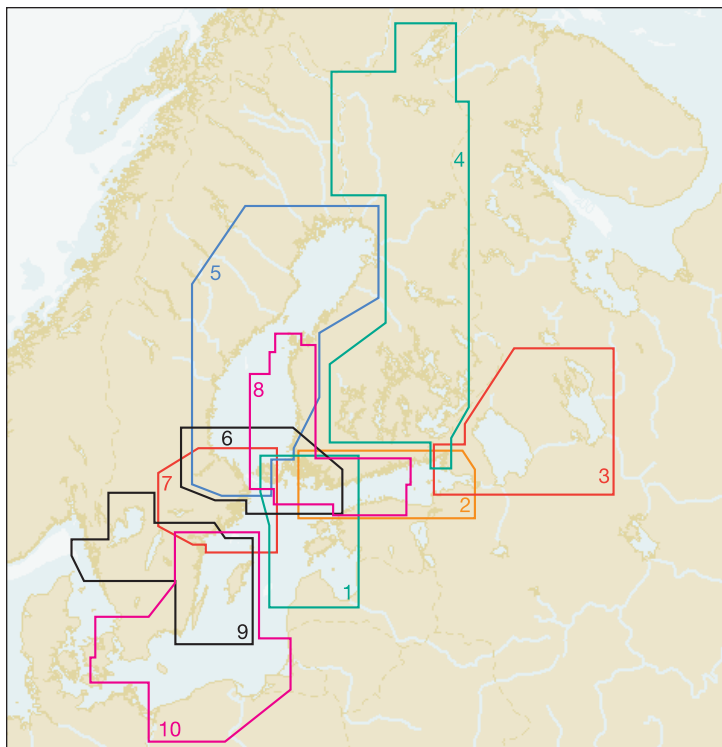
- |   |         |                                       |
|---|---------|---------------------------------------|
| 1 | EW-P005 | IBERIAN PENINSULA INCL. THE ISLANDS   |
| 2 | EW-P006 | FRANCE ATLANTIC AND ENGLISH CHANNEL   |
| 3 | EN-P013 | CENTRAL EUROPEAN INLAND WATERS        |
| 4 | EN-P009 | ICELAND, GREENLAND FAEROE TO SHETLAND |
| 5 | EW-P007 | UK & IRELAND                          |
| 6 | EW-P001 | ENGLISH CHANNEL TO HAMBURG            |
| 7 | EW-P004 | FRANCE AND BELGIUM INLAND             |

**MEGAWIDES** (pp. 18 & 19)

**RENTAL - \$205 USD**

**RENEWAL - \$205 USD**

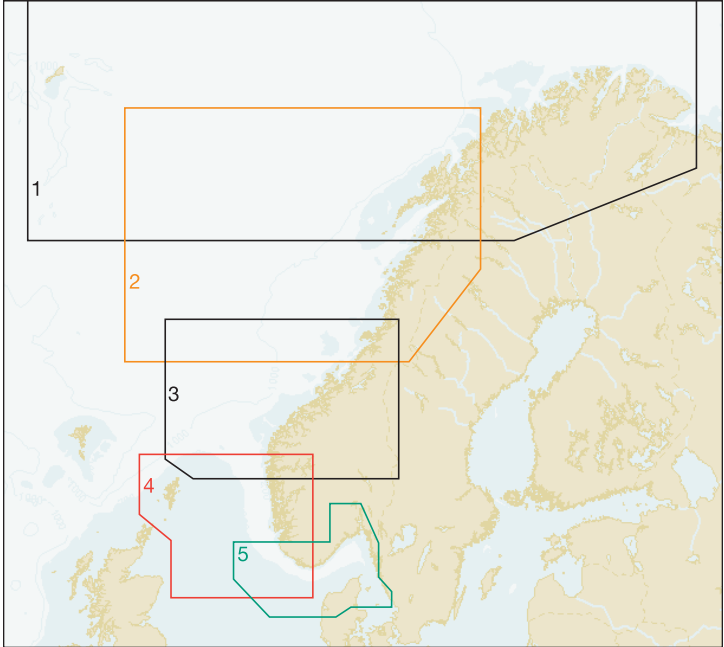
# Baltic Sea, Gulf of Bothnia and Finland



## WIDES - \$465 USD (each)

- |    |         |                       |
|----|---------|-----------------------|
| 1  | EN-P327 | NORTHERN BALTIC       |
| 2  | EN-P325 | GULF OF FINLAND       |
| 3  | EN-P604 | RUSSIAN LAKES         |
| 4  | EN-P326 | FINLAND LAKES         |
| 5  | EN-P259 | GULF OF BOTHNIA       |
| 6  | EN-P260 | AALAND PASSAGES       |
| 7  | EN-P257 | NORRKOEPING TO GAEVLE |
| 8  | EN-P330 | VAASA TO KOTKA        |
| 9  | EN-P256 | INLAND SWEDEN         |
| 10 | EN-P255 | SOUTH EASTERN SWEDEN  |

# Norwegian Coasts



**WIDES - \$465 USD (each)**

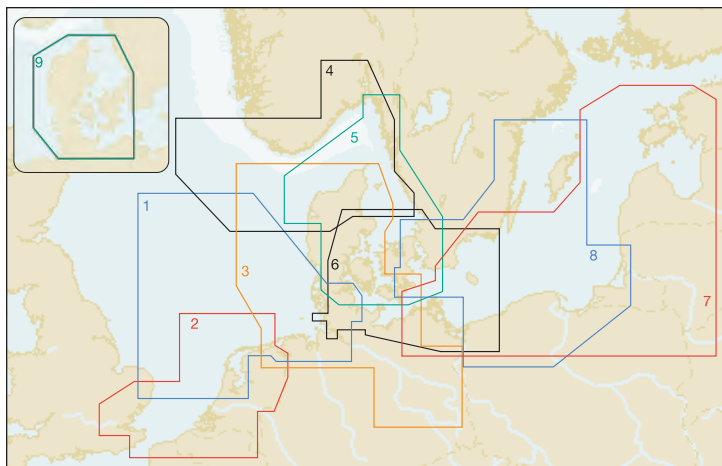
- 1 EN-P571 VESTFJORDEN TO KIRKENES & SVALBARD
- 2 EN-P569 NAMSOS TO SENJA ISLAND
- 3 EN-P568 SOGNEFJORDEN TO TOSENFJORDEN
- 4 EN-P566 MANDAL TO FOERDE
- 5 EN-P565 SKAGERRAK, GOETHEBORG TO EGRSUND

**WIDES** (pp. 20 & 21)

**RENTAL - \$140 USD**

**RENEWAL - \$140 USD**

# Benelux, Germany, Poland and Denmark



## **WIDES - \$465 USD** (each)

- |   |         |                                    |
|---|---------|------------------------------------|
| 1 | EN-P071 | IJMUIDEN TO ESBJERG                |
| 2 | EN-P070 | NETHERLANDS AND BELGIUM            |
| 3 | EN-P159 | NORTH GERMANY AND WESTERN DENMARK  |
| 4 | EN-P565 | SKAGERRAK, GOETHEBORG TO EGBERSUND |
| 5 | EN-P253 | WESTERN SWEDEN                     |
| 6 | EN-P160 | EASTERN DENMARK                    |
| 7 | EN-P706 | ESTONIA, LATVIA, LITHUANIA, POLAND |
| 8 | EN-P255 | SOUTH EASTERN SWEDEN               |
| 9 | EN-P124 | DENMARK                            |

# River Volga



**WIDE - \$465 USD**

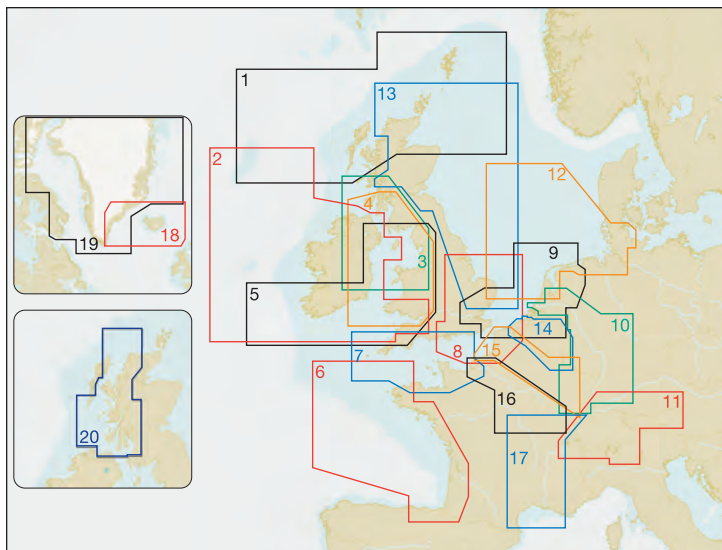
1 RS-P210 VOLGA

**WIDES** (pp. 22 & 23)

**RENTAL - \$140 USD**

**RENEWAL - \$140 USD**

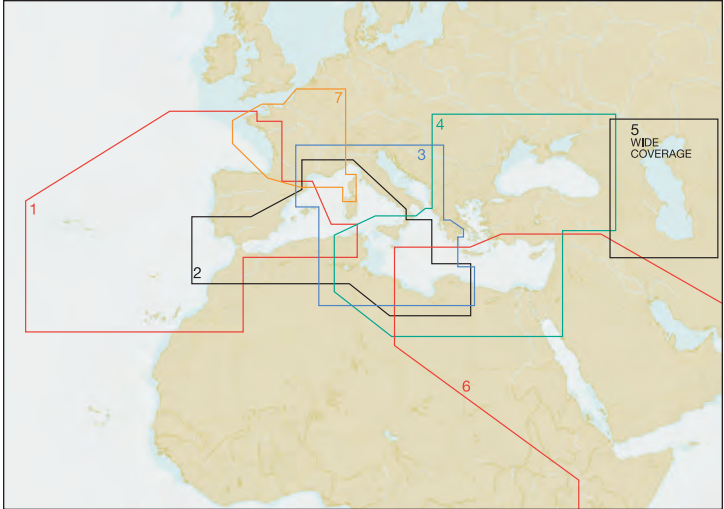
# Western & Central Europe



## WIDES - \$465 USD (each)

- |    |         |                                     |
|----|---------|-------------------------------------|
| 1  | EW-P220 | SHETLAND, ORKNEYS AND WESTERN ISLES |
| 2  | EW-P208 | BRISTOL CH. AND IRELAND             |
| 3  | EW-P202 | LLEYYN PENINSULA TO FIRTH OF LORNE  |
| 4  | EW-P209 | IRISH SEA                           |
| 5  | EW-P207 | BRISTOL CHANNEL AND IRISH SEA       |
| 6  | EW-P203 | FRANCE ATLANTIC COASTS              |
| 7  | EW-P201 | CENTRAL ENGLISH CHANNEL             |
| 8  | EW-P205 | EASTERN ENGLISH CHANNEL             |
| 9  | EN-P070 | NETHERLANDS AND BELGIUM             |
| 10 | EN-P072 | RIVER RHEIN                         |
| 11 | EN-P068 | CENTRAL EUROPEAN LAKES              |
| 12 | EN-P071 | IJMUIDEN TO ESBJERG                 |
| 13 | EW-P214 | HARWICH TO ORKNEY ISLANDS           |
| 14 | EN-P079 | BELGIUM INLAND WATER                |
| 15 | EW-P222 | FRANCE RIVERS: NORTH                |
| 16 | EW-P223 | LA SEINE: LE HAVRE TO DIJON         |
| 17 | EW-P221 | LE RHONE: MARSEILLE TO DIJON        |
| 18 | EN-P402 | ICELAND AND FAEROE ISLANDS          |
| 19 | EN-P154 | GREENLAND COASTS                    |
| 20 | EW-P224 | SCOTLAND WEST                       |

# Med & Red Sea, Caspian & Black Sea



## **MEGAWIDES - \$679 USD** (each)

- 1 EW-P005 IBERIAN PENINSULA INCL. THE ISLANDS
- 2 EM-P001 WEST MEDITERRANEAN SEA
- 3 EM-P002 CENTRAL MEDITERRANEAN SEA
- 4 EM-P003 EAST MEDITERRANEAN - AEGEAN - BLACK SEA
- 5 ME-P005 CASPIAN SEA (**WIDE - \$465**)
- 6 ME-P001 MIDDLE EAST - RED SEA - THE GULF
- 7 EW-P004 FRANCE AND BELGIUM INLAND

### **MEGAWIDES** (above)

**RENTAL - \$205 USD**

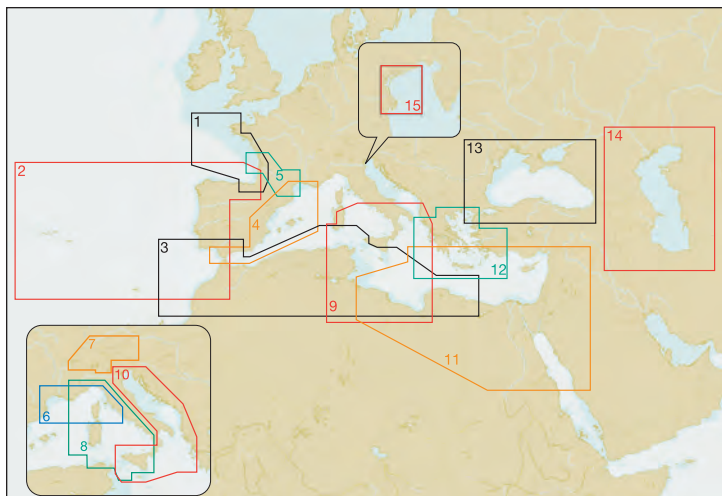
**RENEWAL - \$205 USD**

### **WIDES** (p. 24 & #5 above)

**RENTAL - \$140 USD**

**RENEWAL - \$140 USD**

# Med & Red Sea, Caspian & Black Sea



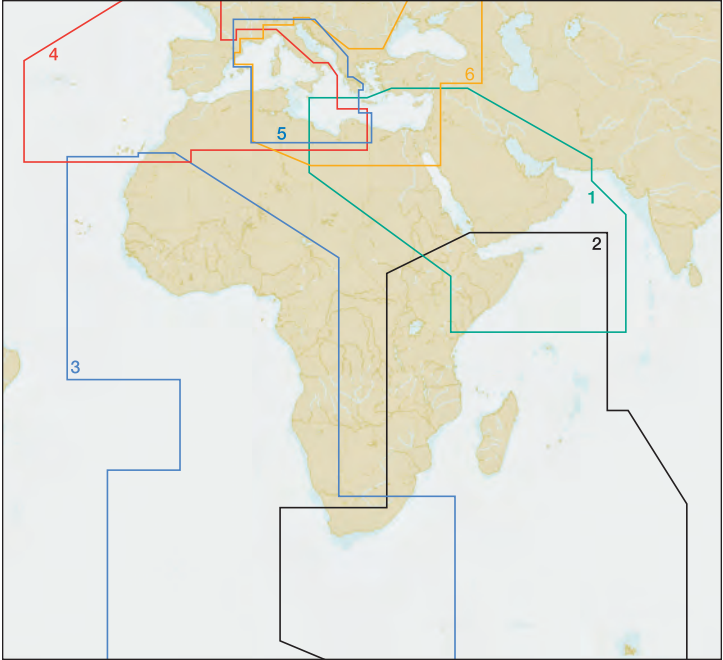
## WIDES - \$465 USD (each)

- |    |         |  |
|----|---------|--|
| 1  | EW-P203 | FRANCE ATLANTIC COASTS                 |
| 2  | EW-P204 | IBERIAN PEN. ATL. - ACORES AND MADEIRA |
| 3  | AF-P201 | AFRICA MEDITERRANEAN NORTH             |
| 4  | EM-P100 | SPAIN MEDITERRANEAN COASTS             |
| 5  | EM-P108 | CANAL DU MIDI                          |
| 6  | EM-P101 | FRANCE MEDITERRANEAN COASTS            |
| 7  | EN-P068 | CENTRAL EUROPEAN LAKES                 |
| 8  | EM-P094 | LIGURIAN AND TYRRHENIAN SEA            |
| 9  | EM-P095 | LOW TYRRHENIAN SEA - TUNISIA - LIBIA   |
| 10 | EM-P097 | ADRIATIC SEA                           |
| 11 | ME-P201 | N-E AFRICA MED. AND MIDDLE EAST COASTS |
| 12 | EM-P104 | AEGEAN SEA                             |
| 13 | EM-P102 | BLACK SEA AND MARMARA                  |
| 14 | ME-P005 | CASPIAN SEA                            |
| 15 | EM-P090 | LAGUNA VENETA                          |

**RENTAL - \$140 USD**

**RENEWAL - \$140 USD**

# Africa and The Middle East



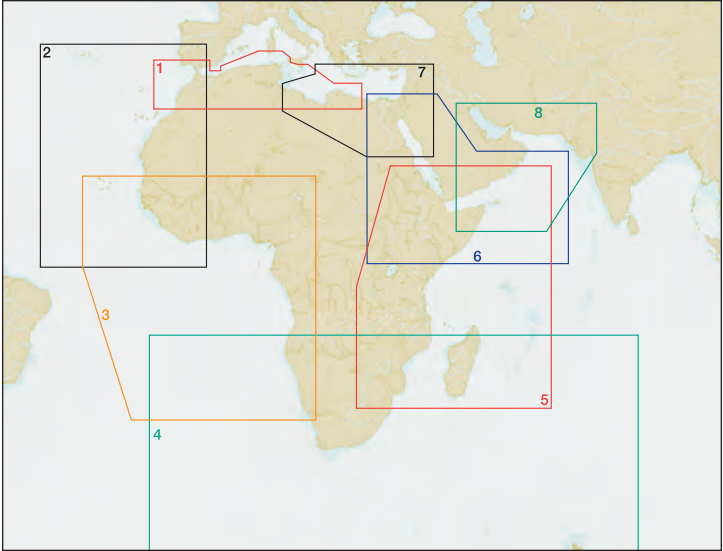
**MEGAWIDES - \$679 USD (each)**

- 1 ME-P001 MIDDLE EAST - RED SEA - THE GULF
- 2 AF-P001 AFRICA EASTERN PART
- 3 AF-P002 WESTERN SAHARA TO SOUTH AFRICA
- 4 EW-P005 IBERIAN PENINSULA INCL. THE ISLANDS
- 5 EM-P001 WEST MEDITERRANEAN SEA

**RENTAL - \$205 USD**

**RENEWAL - \$205 USD**

# Africa and The Middle East



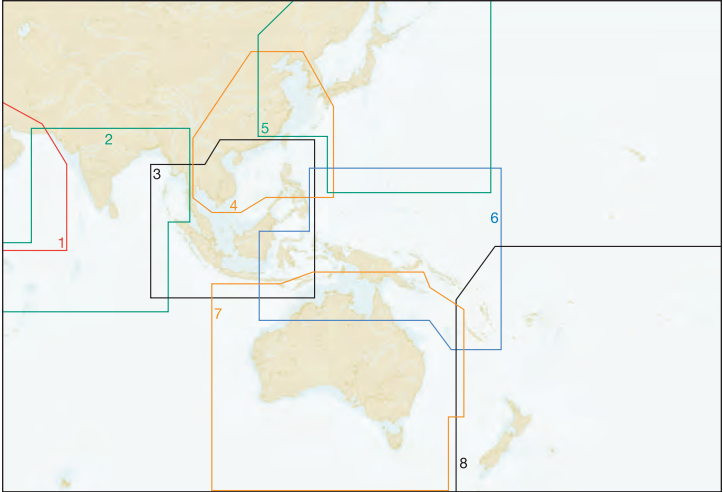
## **WIDES - \$465 USD (each)**

- 1 AF-P201 AFRICA MEDITERRANEAN NORTH
- 2 AF-P202 W-AFRICA AZORES, CANARY, CAPE VERDE
- 3 AF-P203 WESTERN AFRICA: CENTRAL
- 4 AF-P204 SOUTHERN AFRICA
- 5 AF-P205 EASTERN AFRICA
- 6 ME-P202 RED SEA TO ARABIAN SEA
- 7 ME-P201 N-E AFRICA MED. AND MIDDLE EAST COASTS
- 8 ME-P203 THE GULF TO GULF OF ADEN

**RENTAL - \$140 USD**

**RENEWAL - \$140 USD**

# Indian Ocean, Asia and Oceania



**MEGAWIDES - \$679 USD** (each)

- 1 ME-P001 MIDDLE EAST - RED SEA - THE GULF
- 2 IN-P002 INDIAN OCEAN
- 3 IN-P001 SINGAPORE TO SOUTH CHINA SEA
- 4 AS-P001 GULF OF THAILAND TO YELLOW SEA
- 5 AN-P001 EAST CHINA SEA TO KAMCHATKA

**RENTAL - \$205 USD**

**RENEWAL - \$205 USD**

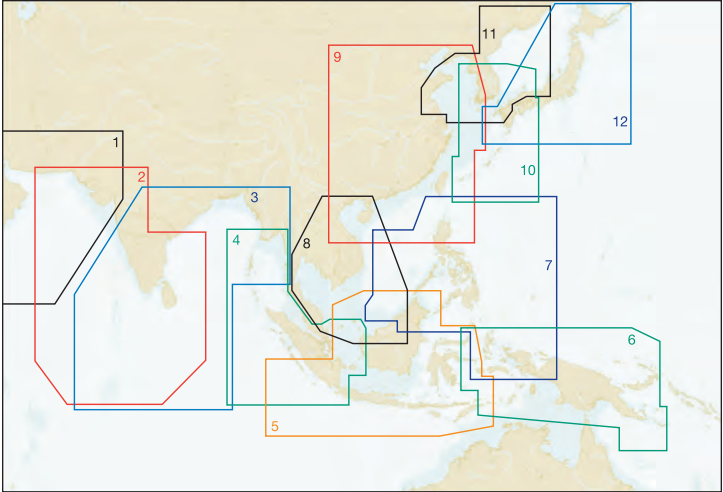
**MEGAWIDES - \$740 USD** (each)

- 6 AU-P002 PAPUA - NEW GUINEA
- 7 AU-P005 AUSTRALIA
- 8 AU-P001 NEW ZEALAND AND PACIFIC ISLANDS

**RENTAL - \$225 USD**

**RENEWAL - \$225 USD**

# Indian Ocean and Asia



## WIDES - \$465 USD (each)

- 1 ME-P203 THE GULF TO GULF OF ADEN
- 2 IN-P201 EASTERN INDIA AND MALDIVES
- 3 IN-P202 MALDIVES TO GULF OF MARTABAN
- 4 IN-P203 GULF OF MARTABAN TO JAKARTA
- 6 AU-P207 PAPUA NEW GUINEA
- 7 AS-P205 PHILIPPINES
- 8 AS-P201 GULF OF THAILAND TO HAINAN DAO
- 9 AS-P204 HAINAN DAO TO YELLOW SEA
- 10 AN-P202 KOREA STRAIT TO OKINAWA SHIMA
- 11 AN-P203 YELLOW SEA TO MALAYA
- 12 AN-P204 JAPAN AND HOKKAIDO

**RENTAL - \$140 USD**

**RENEWAL - \$140 USD**

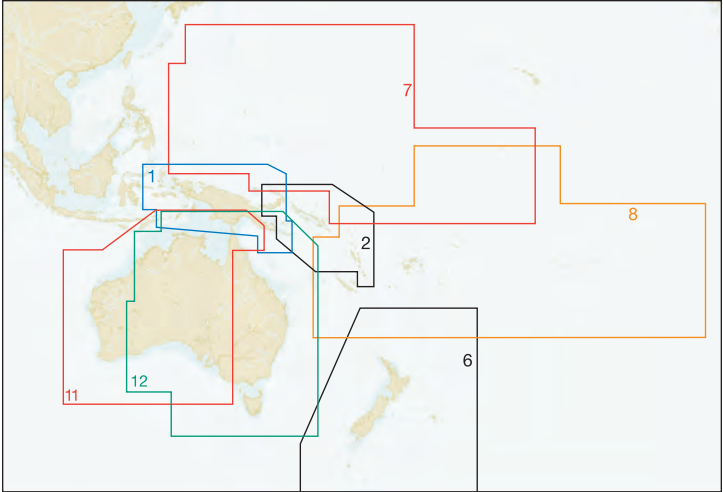
## WIDE - \$505 USD (each)

- 5 AS-P206 JAVA AND INDONESIA

**RENTAL - \$155 USD**

**RENEWAL - \$155 USD**

# Oceania



**WIDES - \$465 USD (each)**

- 7 PC-P203 CAROLINAS, KIRIBATI, MARSHALL, MARIANAS
- 8 PC-P204 SOUTH PACIFIC ISLANDS

**RENTAL - \$140 USD**

**RENEWAL - \$140 USD**

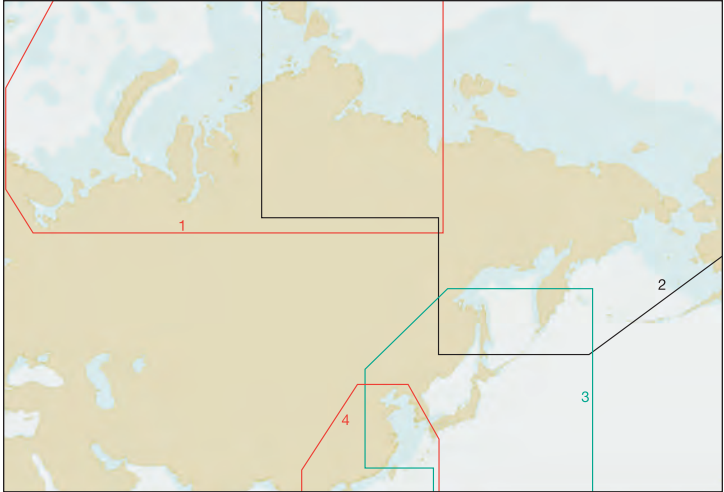
**WIDES - \$505 USD (each)**

- 1 AU-P207 PAPUA NEW GUINEA
- 2 AU-P210 SOLOMON AND VANUATU ISLANDS
- 6 AU-P222 NEW ZEALAND, CHATHAM I. AND KERMADEC I.
- 11 AU-P250 WEST COAST OF AUSTRALIA
- 12 AU-P251 EAST COAST OF AUSTRALIA

**RENTAL - \$155 USD**

**RENEWAL - \$155 USD**

# Russian Federation



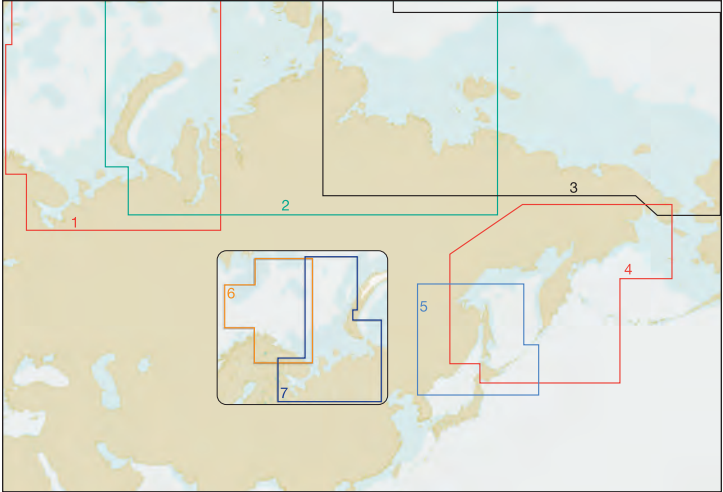
## **MEGAWIDES - \$679 USD (each)**

- 1 RS-P001 RUSSIAN FEDERATION NORTH WEST
- 2 RS-P002 RUSSIAN FEDERATION NORTH EAST
- 3 AN-P001 EAST CHINA SEA TO KAMCHATKA
- 4 AS-P001 GULF OF THAILAND TO YELLOW SEA

**RENTAL - \$205 USD**

**RENEWAL - \$205 USD**

# Russian Federation

**WIDES - \$465 USD (each)**

- 1 RS-P202 RUSSIAN FEDERATION NORTH WEST
- 2 RS-P203 RUSSIAN FEDERATION NORTH CENTRAL
- 3 RS-P204 RUSSIAN FEDERATION NORTH EAST
- 4 AN-P013 KAMCHATKA PENINSULA AND KURIL ISLANDS
- 5 RS-P207 HOKKAIDO AND SAKHALIN ISLANDS
- 6 RS-P208 BARENTS SEA WEST FISHING
- 7 RS-P209 WHITE SEA - BARENTS SEA EAST FISHING

**RENTAL - \$140 USD****RENEWAL - \$140 USD**

# The World



**The World - \$12,999** (each)

AA-A000 WORLD

**RENTAL - \$3,899 USD**

**RENEWAL - \$3,899 USD**

All products in this catalog are priced in U.S. Dollars (USD). Product availability and prices are subject to change without notice.

# Customer Policies

## CUSTOMER CARE

Business hours are 8:45 AM until 5:00 PM Monday through Friday (EST). Orders may be placed toll-free at 1.800.424.2627, Phone: 508.477.8010 or via Fax: 1.508.539.4381, E-mail: [us-customersupport@jeppesen.com](mailto:us-customersupport@jeppesen.com).

## 12-MONTH WARRANTY

Jeppesen Marine warrants that this product shall be operative and free of defects in factory-provided material and workmanship for 12 months after original purchase. This warranty does not cover damage resulting from negligent installations, improper operations, unauthorized repair and/or substitution of component parts other than those provided by Jeppesen Marine, water damage, submersion, lightning or fire. Full performance specifications (expressed or implied) that can be adversely affected by installations and operating environment are not covered under this warranty. Any defective product that is received by Jeppesen Marine during the warranty period will be repaired or replaced free of charge at Jeppesen Marine's discretion.

## RETURN/REFUND POLICY

Products must be returned with a Return Authorization (RA) number provided by Jeppesen Marine. Returns will not be accepted without an RA number or prior approval. Call our office and request an RA number for the return of your product(s). Proof of date and source of purchase must accompany warranty claims. Jeppesen Marine reserves the right to determine each warranty status on an individual basis. See warranty information for further details. All sales are final 15 days after receipt. Any product returned for cause (in good working condition and in original packaging) within 15 days from receipt, is fully refundable (less shipping charges).

## LIMITS OF LIABILITY

The foregoing shall constitute the sole and exclusive remedy of any owner of this product for breach of warranty including the implied warranties of merchantability and fitness. In no event shall Jeppesen Marine be liable for special or consequential damages; nor shall they be liable for the representatives of retail sellers.

## TECHNICAL SUPPORT

Business hours are 8:45 AM until 5:00 PM Monday through Friday (EST). Call toll-free: 1.800.732.2800 or Phone: 508.477.8010; Fax: 508.539.4381; E-mail: [marine.support@jeppesen.com](mailto:marine.support@jeppesen.com).

June 2010

**CONTACT US:**

Cape Cod, MA

Toll-Free: 800.424.2627

Global: +1 508.477.8010

E-mail: [us-customersupport@jeppesen.com](mailto:us-customersupport@jeppesen.com)

[jeppesen.com/lightmarine](http://jeppesen.com/lightmarine)

Jeppesen is a Boeing Company



ML-C-MAXP-1\_10